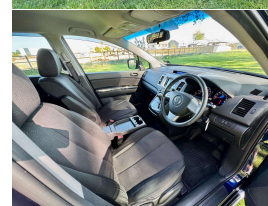
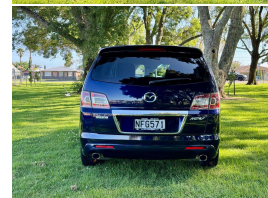
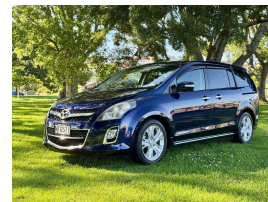
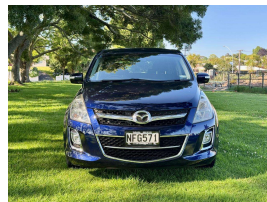


# 2009 Mazda MPV 23T Turbo



## VEHICLE INFORMATION

### Cash Price

Includes GST,  
Registration &  
Licensing

# \$9,990

Finance this vehicle  
from only

# \$68.53

per week\*

Total Amount Payable

\$14,255.22

### Body

5 door, People Movers

### Odometer

82,026 km

### Engine

2260 cc, Internal Combustion

### Fuel Type

98 Petrol

### Transmission

Auto, Front Wheel

### Reg No.

NFG571

### Ext Colour

Blue

### History

Ex-Overseas, 1 owner

### Seats

8 seats, Cloth

### Interior

Black, Cloth

### Exterior Features

- » alloy wheels
- » Electric doors
- » Electric Mirrors (Retractable)
- » Fog Lights
- » Keyless entry
- » Rear Wiper
- » Reversing camera

### Interior Features

- » Air Conditioning
- » bluetooth
- » CD Player
- » Central Locking
- » Child seat anchor points
- » Climate Control
- » Electric Mirrors
- » Electric Windows
- » NEW KENWOOD AUDIO

### Mechanical Features

- » ABS Braking
- » EFI
- » Power Steering

**AA** Motoring

Preferred  
Dealer

**AA** Motoring

Safety  
Certified



Over 25 years servicing Tauranga and the Bay of Plenty, and 20,000+ quality cars sold nationwide.



Car Connexion, Phone 07 571 1335, Email sales@ccx.co.nz

141 Second Avenue, Tauranga 3110, New Zealand

www.ccx.co.nz

\* Finance calculation based on a 48 month term, no deposit and with an example annual fixed interest rate of 14.75%. Actual interest rate may be higher or lower. Includes an establishment fee of \$423.00 and a monthly maintenance fee of \$8.50. Full term total amount payable of \$14,255.22. Estimate only, not an offer of finance. Terms, conditions and lending criteria apply.