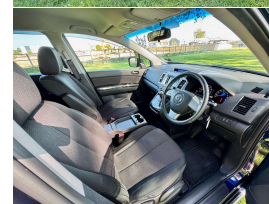
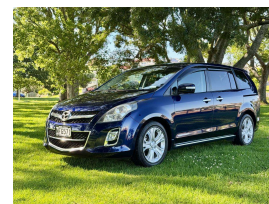
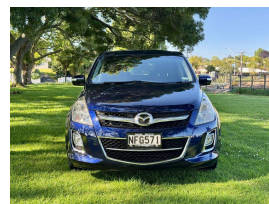


2009 Mazda MPV 23T Turbo



VEHICLE INFORMATION

Cash Price

Includes GST,
Registration &
Licensing

\$13,990

Finance this vehicle
from only

\$94.11

per week*

Total Amount Payable

\$19,574.42

FINANCE
CENTRAL
powered by Thorn Finance

Body

5 door, People Movers

Odometer

82,026 km

Engine

2260 cc, Internal Combustion

Fuel Type

-

Transmission

AT, Front Wheel

Reg No.

NFG571

Ext Colour

Blue

History

Ex-Overseas, 1 owner

Seats

8 seats, Cloth

Interior

Black, Cloth

Exterior Features

- » alloy wheels
- » Electric doors
- » Electric Mirrors (Retractable)
- » Fog Lights
- » Keyless entry
- » Rear Wiper
- » Reversing camera

Interior Features

- » Air Conditioning
- » bluetooth
- » CD Player
- » Central Locking
- » Child seat anchor points
- » Climate Control
- » Electric Mirrors
- » Electric Windows
- » NEW KENWOOD AUDIO

Mechanical Features

- » ABS Braking
- » EFI
- » Power Steering

AA Motoring

Preferred
Dealer

AA Motoring

Safety
Certified



Over 25 years servicing Tauranga and the Bay of Plenty, and 20,000+ quality cars sold nationwide.



Car Connexion, Phone 07 571 1335, Email sales@ccx.co.nz
141 Second Avenue, Tauranga 3110, New Zealand
www.ccx.co.nz

* Finance calculation based on a 48 month term, no deposit and with an example annual fixed interest rate of 14.75%. Actual interest rate may be higher or lower. Includes an establishment fee of \$423.00 and a monthly maintenance fee of \$8.50. Full term total amount payable of \$19,574.42. Estimate only, not an offer of finance. Terms, conditions and lending criteria apply.