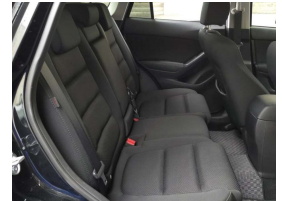
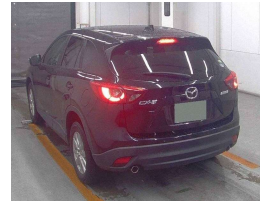




2016 Mazda CX-5 20S PROACTIVE



VEHICLE INFORMATION

Cash Price

Includes GST,
Registration &
Licensing

\$22,000

Finance this vehicle
from only

\$145.32

per week*

Total Amount Payable

\$30,226.13

Body

5 door, SUV

Odometer

72,793 km

Engine

1997 cc, Internal Combustion

Fuel Type

Petrol

Transmission

Auto, Front Wheel

Reg No.

-

Ext Colour

Black

History

Ex-Overseas, 1 owner

Seats

5 seats, Cloth

Interior

Grey, Cloth

Exterior Features

- » Driving lights
- » Electric Mirrors (Retractable)
- » Face Lift Model
- » Factory Alloys
- » Keyless entry
- » Parking Sensors
- » Rear Wiper
- » Reversing camera
- » Side Camera

Interior Features

- » 6 Airbags
- » Air Conditioning
- » Central Locking
- » Child seat anchor points
- » Climate Control
- » Electric Mirrors
- » Electric Windows
- » Keyless start
- » Multi Airbags

Mechanical Features

- » ABS Braking
- » Adaptive Cruise Control
- » Auto stop
- » ELECTRIC PARKING BRAKE
- » i-Stop
- » Keyless start
- » Lane Assist
- » Power Steering
- » Proactiv

AA Motoring

Preferred
Dealer

AA Motoring

Safety
Certified



Over 25 years servicing Tauranga and the Bay of Plenty, and 20,000+ quality cars sold nationwide.



Car Connexion, Phone 07 571 1335, Email sales@ccx.co.nz

141 Second Avenue, Tauranga 3110, New Zealand

www.ccx.co.nz

* Finance calculation based on a 48 month term, no deposit and with an example annual fixed interest rate of 14.75%. Actual interest rate may be higher or lower. Includes an establishment fee of \$423.00 and a monthly maintenance fee of \$8.50. Full term total amount payable of \$30,226.13. Estimate only, not an offer of finance. Terms, conditions and lending criteria apply.