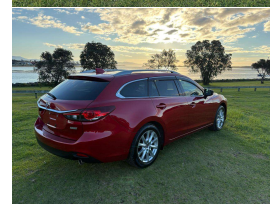
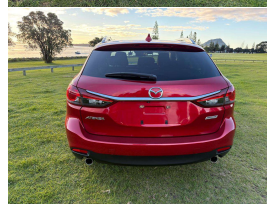
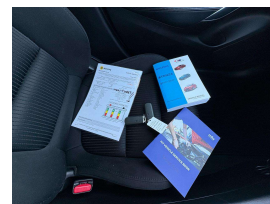




2014 Mazda Atenza 20S Stationwagon



VEHICLE INFORMATION

Cash Price

Includes GST,
Registration &
Licensing

\$18,990

Body

5 door, Station Wagon

Reg No.

-

Odometer

61,532 km

Ext Colour

Soul Red Chrystal

Engine

1997 cc

History

Ex-Overseas

Fuel Type

-

Seats

5 seats, Cloth

Transmission

Auto, Front Wheel

Interior

Grey, Cloth

Finance this vehicle
from only

\$126.07

per week*

Total Amount Payable

\$26,223.43



Exterior Features

- » Driving lights
- » Electric Mirrors (Retractable)
- » Face Lift Model
- » Keyless entry
- » Rear Wiper
- » Reversing camera
- » Roof Rails
- » Side Skirts
- » Spoiler

Interior Features

- » 6 Airbags
- » Air Conditioning
- » Central Locking
- » Child seat anchor points
- » Climate Control
- » Electric Mirrors
- » Electric Windows
- » Keyless start
- » Multi Airbags

Mechanical Features

- » AA Appraised
- » ABS Braking
- » AFS - Adaptive Front Lighting System
- » Auto stop
- » Cruise Control
- » i-Stop
- » Keyless start
- » Power Steering
- » Push button start



Preferred
Dealer



Safety
Certified



Over 25 years servicing Tauranga and the Bay of Plenty, and 20,000+ quality cars sold nationwide.



Car Connexion, Phone 07 571 1335, Email sales@ccx.co.nz
141 Second Avenue, Tauranga 3110, New Zealand
www.ccx.co.nz

* Finance calculation based on a 48 month term, no deposit and with an example annual fixed interest rate of 14.75%. Actual interest rate may be higher or lower. Includes an establishment fee of \$423.00 and a monthly maintenance fee of \$8.50. Full term total amount payable of \$26,223.43. Estimate only, not an offer of finance. Terms, conditions and lending criteria apply.