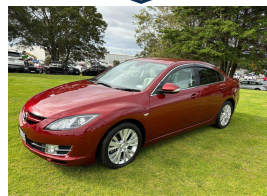
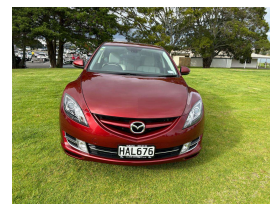


# 2008 Mazda Atenza



## VEHICLE INFORMATION

### Cash Price

Includes GST,  
Registration &  
Licensing

**\$9,990**

### Body

4 door

### Odometer

56,555 km

### Engine

2480 cc, Internal Combustion

### Fuel Type

-

### Transmission

Auto, Front Wheel

### Reg No.

HAL676

### Ext Colour

Wine Red

### History

Ex-Overseas, 2 owners

### Seats

5 seats, Leather

### Interior

Ivory, Leather

Finance this vehicle  
from only

**\$68.53**

per week\*

Total Amount Payable

**\$14,255.22**

**FINANCE**  
CENTRAL  
powered by Thorn Finance

### Exterior Features

- » Driving lights
- » Electric Mirrors
- » Keyless entry
- » Reversing camera

### Interior Features

- » 8 Airbags
- » Air Conditioning
- » Central Locking
- » Child seat anchor points
- » Climate Control
- » Electric Mirrors
- » Electric Seats
- » Keyless start
- » Multi Airbags

### Mechanical Features

- » ABS Braking
- » Keyless start
- » Power Steering
- » Push button start

**AA** Motoring

Preferred  
Dealer

**AA** Motoring

Safety  
Certified



Over 25 years servicing Tauranga and the Bay of Plenty, and 20,000+ quality cars sold nationwide.



Car Connexion, Phone 07 571 1335, Email sales@ccx.co.nz  
141 Second Avenue, Tauranga 3110, New Zealand  
WWW.CCX.CO.NZ

\* Finance calculation based on a 48 month term, no deposit and with an example annual fixed interest rate of 14.75%. Actual interest rate may be higher or lower. Includes an establishment fee of \$423.00 and a monthly maintenance fee of \$8.50. Full term total amount payable of \$14,255.22. Estimate only, not an offer of finance. Terms, conditions and lending criteria apply.