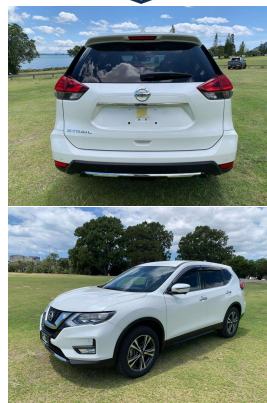




2018 Nissan X-TRAIL 20X EMERGENCY



VEHICLE INFORMATION

Cash Price

Includes GST,
Registration &
Licensing

\$25,990

Body

5 door, SUV

Reg No.

-

Odometer

68,591 km

Ext Colour

White

Engine

1997 cc, Internal Combustion

History

Ex-Overseas

Fuel Type

Petrol

Seats

7 seats, Synthetic Leather

Transmission

Auto, Front Wheel

Interior

Black, Synthetic Leather

Finance this vehicle
from only

\$170.83

per week*

Total Amount Payable

\$35,532.03

FINANCE
CENTRAL
powered by Thorn Finance

Exterior Features

- » alloy wheels
- » Around View Camera
- » Driving lights
- » Electric Mirrors (Retractable)
- » Electric Tailgate
- » Face Lift Model
- » Keyless entry
- » Parking Sensors
- » Privacy glass

Interior Features

- » 2 Airbags
- » Air Conditioning
- » AUX input
- » bluetooth
- » Cd player (single)
- » Central Locking
- » Child seat anchor points
- » Climate Control
- » Electric Mirrors

Mechanical Features

- » AA Appraised
- » ABS Braking
- » Adaptive Cruise Control
- » Auto stop
- » Automatic headlights
- » Blind Spot Monitoring
- » ELECTRIC PARKING BRAKE
- » Emergency Brake System
- » Forward Collision Warning (FCW)

AA Motoring

Preferred
Dealer

AA Motoring

Safety
Certified



Over 25 years servicing Tauranga and the Bay of Plenty, and 20,000+ quality cars sold nationwide.



Car Connexion, Phone 07 571 1335, Email sales@ccx.co.nz
141 Second Avenue, Tauranga 3110, New Zealand
WWW.CCX.CO.NZ

* Finance calculation based on a 48 month term, no deposit and with an example annual fixed interest rate of 14.75%. Actual interest rate may be higher or lower. Includes an establishment fee of \$423.00 and a monthly maintenance fee of \$8.50. Full term total amount payable of \$35,532.03. Estimate only, not an offer of finance. Terms, conditions and lending criteria apply.