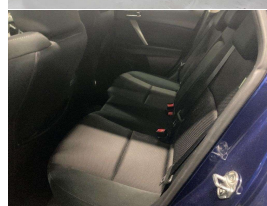
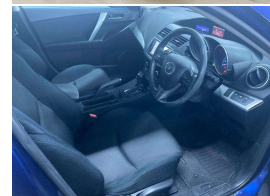
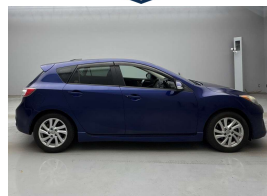




# 2012 Mazda AXELA 20S Skyactive Sport



## VEHICLE INFORMATION

### Cash Price

Includes GST,  
Registration &  
Licensing

**\$14,000**

### Body

5 door, Hatchback

### Reg No.

-

### Odometer

58,157 km

### Ext Colour

Blue

### Engine

1997 cc, Internal Combustion

### History

-

### Fuel Type

Petrol

### Seats

5 seats, Cloth

### Transmission

Auto, Front Wheel

### Interior

Grey, Cloth

Finance this vehicle  
from only

**\$94.17**

per week\*

Total Amount Payable

\$19,587.72

### Exterior Features

- » Body Kit (Factory)
- » Driving lights
- » Electric Mirrors (Retractable)
- » Keyless entry
- » Rear Wiper
- » Side Skirts
- » Spoiler

### Interior Features

- » 6 Airbags
- » Air Conditioning
- » Bluetooth Phone/Audio
- » Central Locking
- » Child seat anchor points
- » Climate Control
- » Electric Mirrors
- » Electric Windows
- » Keyless start

### Mechanical Features

- » ABS Braking
- » i-Stop
- » Keyless start
- » Paddle - Shift
- » Power Steering
- » SKYACTIV
- » Stability Control

**AA** Motoring

Preferred  
Dealer

**AA** Motoring

Safety  
Certified



Over 25 years servicing Tauranga and the Bay of Plenty, and 20,000+ quality cars sold nationwide.



Car Connexion, Phone 07 571 1335, Email sales@ccx.co.nz  
141 Second Avenue, Tauranga 3110, New Zealand  
WWW.CCX.CO.NZ

\* Finance calculation based on a 48 month term, no deposit and with an example annual fixed interest rate of 14.75%. Actual interest rate may be higher or lower. Includes an establishment fee of \$423.00 and a monthly maintenance fee of \$8.50. Full term total amount payable of \$19,587.72. Estimate only, not an offer of finance. Terms, conditions and lending criteria apply.