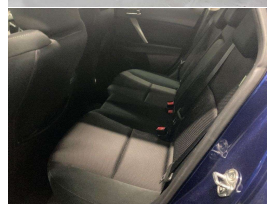
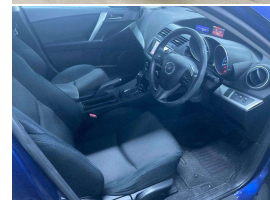
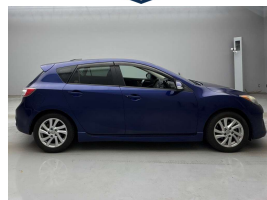




2012 Mazda AXELA 20S Skyactive Sport



VEHICLE INFORMATION

Cash Price

Includes GST,
Registration &
Licensing

\$14,000

Body

5 door, Hatchback

Odometer

58,152 km

Engine

2000 cc, Internal Combustion

Fuel Type

Petrol

Transmission

Auto, Front Wheel

Reg No.

-

Ext Colour

Blue

History

-

Seats

5 seats, Cloth

Interior

Grey, Cloth

Finance this vehicle
from only

\$94.17

per week*

Total Amount Payable

\$19,587.72

FINANCE
CENTRAL
powered by Thorn Finance

Exterior Features

- » Body Kit (Factory)
- » Driving lights
- » Electric Mirrors (Retractable)
- » Keyless entry
- » Rear Wiper
- » Side Skirts
- » Spoiler

Interior Features

- » 6 Airbags
- » Air Conditioning
- » Central Locking
- » Child seat anchor points
- » Climate Control
- » Electric Mirrors
- » Electric Windows
- » Keyless start
- » Multi Airbags

Mechanical Features

- » ABS Braking
- » i-Stop
- » Keyless start
- » Paddle - Shift
- » Power Steering
- » SKYACTIV
- » Stability Control

AA Motoring

Preferred
Dealer

AA Motoring

Safety
Certified



Over 25 years servicing Tauranga and the Bay of Plenty, and 20,000+ quality cars sold nationwide.



Car Connexion, Phone 07 571 1335, Email sales@ccx.co.nz
141 Second Avenue, Tauranga 3110, New Zealand
WWW.CCX.CO.NZ

* Finance calculation based on a 48 month term, no deposit and with an example annual fixed interest rate of 14.75%. Actual interest rate may be higher or lower. Includes an establishment fee of \$423.00 and a monthly maintenance fee of \$8.50. Full term total amount payable of \$19,587.72. Estimate only, not an offer of finance. Terms, conditions and lending criteria apply.