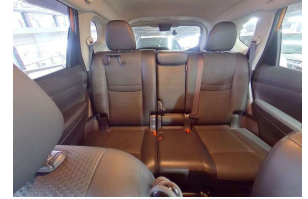
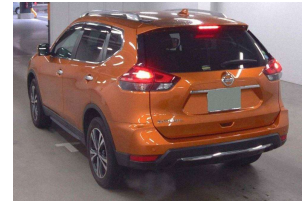




# 2019 Nissan X-TRAIL 20 X 2WD



## VEHICLE INFORMATION

### Cash Price

Includes GST,  
Registration &  
Licensing

# \$30,000

### Body

5 door, SUV

### Reg No.

-

### Odometer

24,344 km

### Ext Colour

Orange Pearl

### Engine

2000 cc

### History

Ex-Overseas

### Fuel Type

Petrol

### Seats

7 seats, Synthetic Leather

### Transmission

Auto, Front Wheel

### Interior

Black, Synthetic Leather

Finance this vehicle  
from only

# \$196.46

per week\*

Total Amount Payable

# \$40,864.53



### Exterior Features

- » Around View Camera
- » Driving lights
- » Electric Mirrors (Retractable)
- » Face Lift Model
- » Keyless entry
- » Rear Wiper
- » Reversing camera
- » Roof Rails
- » Spoiler

### Interior Features

- » 2 Airbags
- » Air Conditioning
- » Central Locking
- » Child seat anchor points
- » Climate Control
- » Electric Mirrors
- » Electric Windows
- » Keyless start

### Mechanical Features

- » AA Appraised
- » ABS Braking
- » Auto stop
- » Keyless start
- » Power Steering
- » Push button start
- » Stability Control



Preferred  
Dealer



Safety  
Certified



Over 25 years servicing Tauranga and the Bay of Plenty, and 20,000+ quality cars sold nationwide.



Car Connexion, Phone 07 571 1335, Email sales@ccx.co.nz  
141 Second Avenue, Tauranga 3110, New Zealand  
www.ccx.co.nz

\* Finance calculation based on a 48 month term, no deposit and with an example annual fixed interest rate of 14.75%. Actual interest rate may be higher or lower. Includes an establishment fee of \$423.00 and a monthly maintenance fee of \$8.50. Full term total amount payable of \$40,864.53. Estimate only, not an offer of finance. Terms, conditions and lending criteria apply.