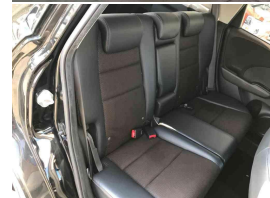
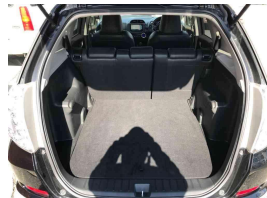
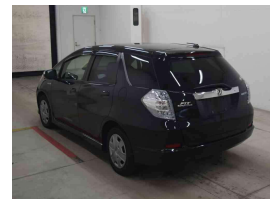




2013 Honda FIT SHUTTLE HYBRID



VEHICLE INFORMATION

Cash Price

Includes GST,
Registration &
Licensing

\$12,990

Body

5 door, Station Wagon

Reg No.

-

Odometer

59,867 km

Ext Colour

Black

Engine

1339 cc, Hybrid

History

Ex-Overseas

Fuel Type

Petrol

Seats

5 seats, 1/2 Leather

Transmission

Auto, Front Wheel

Interior

Black, 1/2 Leather

Finance this vehicle
from only

\$87.71

per week*

Total Amount Payable

\$18,244.62



Exterior Features

- » Body Kit (Factory)
- » Driving lights
- » Electric Mirrors
- » Face Lift Model
- » Keyless entry
- » Rear Wiper
- » Reversing camera
- » Side Skirts

Interior Features

- » 2 Airbags
- » Air Conditioning
- » Central Locking
- » Child seat anchor points
- » Climate Control
- » Electric Mirrors
- » Electric Windows
- » Keyless start
- » Power Steering

Mechanical Features

- » AA Appraised
- » ABS Braking
- » Auto stop
- » Cruise Control
- » Keyless start
- » Stability Control
- » VTEC

AA Motoring

Preferred
Dealer

AA Motoring

Safety
Certified



Over 25 years servicing Tauranga and the Bay of Plenty, and 20,000+ quality cars sold nationwide.



Car Connexion, Phone 07 571 1335, Email sales@ccx.co.nz

141 Second Avenue, Tauranga 3110, New Zealand

www.ccx.co.nz

* Finance calculation based on a 48 month term, no deposit and with an example annual fixed interest rate of 14.75%. Actual interest rate may be higher or lower. Includes an establishment fee of \$423.00 and a monthly maintenance fee of \$8.50. Full term total amount payable of \$18,244.62. Estimate only, not an offer of finance. Terms, conditions and lending criteria apply.